

## Instruction Sheet

Follow these instructions to remount the cracked bezel touch screen controller (see Figure 1).

**NOTE: If reworking crated units in a warehouse, a large hole will need to be cut out to access ALL the controllers.**

**Subject: 8263959 Controller (UX) Field Repair Kit Instructions**

**Models affected: Frymaster Touch Screen fryers**

**6.8.26**

1. Remove the two Phillips head screws from the upper left and right corners of the controller (see Figure 2).
2. Slide the controller up to disengage it from the bezel (see Figure 3).
3. Lift the controller out from the bezel (see Figure 4).
4. Lower the controller and rest it on the bottom of the control box (see Figure 5). The black tether on the right will support the controller.
5. Disconnect the RJ45 cable from the SIB board **FIRST** (see Figure 6).
6. Disconnect the ground cable and the speaker cable and the USB cable (if applicable) (see Figure 7).
7. Disconnect the lanyard tether from the frame (see Figure 8) to remove the controller.
8. Relocate the controller away from the fryer.

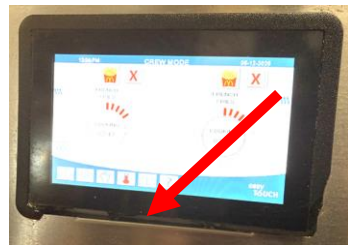


Figure 1

In This Kit		
Part #	Description	Qty
130442296	RETAINER, UI FIELD REPAIR	1
130443251	BEZEL ASM UX FIELD REPAIR	1
8090250	NUT, 6-32 KEPS HX	10
8198100	INSTRUCTIONS	1

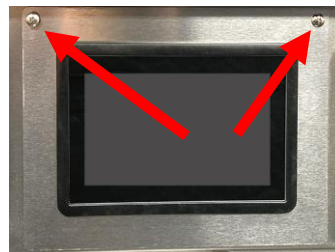


Figure 2



Figure 3



Figure 4

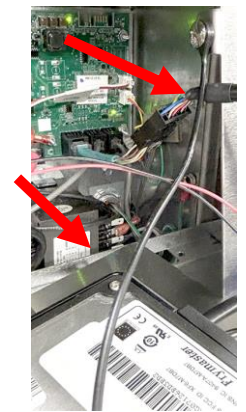


Figure 5



Figure 6

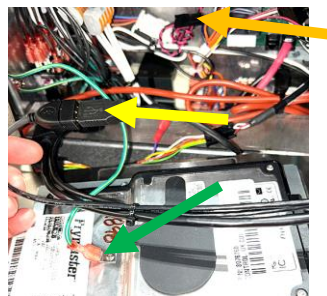


Figure 7



Figure 8

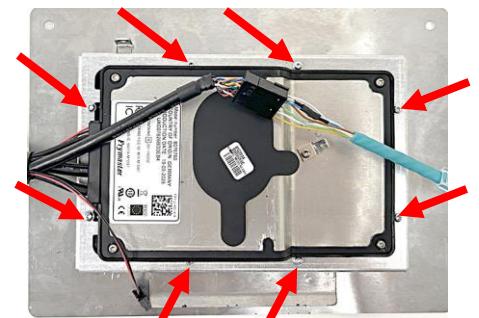


Figure 9

